

# Alternative Futures Scenarios

What might the Osa and Golfito Region look like in 2030?



# An Introduction to Alternative Futures Scenarios

- Alternative futures modeling engages stakeholders in a process where they can :
  - Interact with multiple possible paths forward
  - Understand that the future is not already decided, but something that can be influenced and altered
  - Become empowered with the understanding that they have a stake in the future of their children
- In collaboration with GeoAdaptive LLC (an MIT/Harvard spin-off), INOGO engaged with leaders throughout the Osa and Golfito area to model three alternative futures.



# 1. Business As Usual

POPULATION



+16,000 people(+23%)

INFRASTRUCTURE



Only Maintenance

CONSERVATION



+ 5000 hect/year PES  
Private Conservation like today

TOURISM



225 hotel rooms  
(+15 hotel)

LAND USE PLANNING  
AND MARINE  
SPATIAL PLANNING



Regulation with Enforcement  
(anything goes)

SPECIAL PROJECTS



With Diquis/ Without Airport

HEALTH/EDUCATION



Same as today

# Business as Usual 2030

- +16,000 people(+23%)
- Without infrastructure Improvements
- +5000 hect/year PES
- 225 rooms(+15 hotels)
- Regulation without Enforcement (anything goes)
- With Diquis/Without Airport
- Without agriculture
- Same health and education as today



Roads	Category
— Highway	■ Conservation
— Secondary road	■ Development
— Tertiary road	■ Palm Oil Plantations
	■ Tourism
	■ Vacation Homes
	■ Agriculture

# 2. Rapid Growth

POPULATION



+23,400 people(+35%)

INFRASTRUCTURE



Electricity, Paved roads, bridges

CONSERVATION



+ 1000 hect/ year PES  
Same private conservation as today

TOURISM



700 hotel rooms  
(+50 hotels)

LAND USE PLANNING  
AND MARINE  
SPATIAL PLANNING



Regulation without enforcement  
(anything goes)

SPECIAL PROJECTS



With new International  
Airport and Diquis

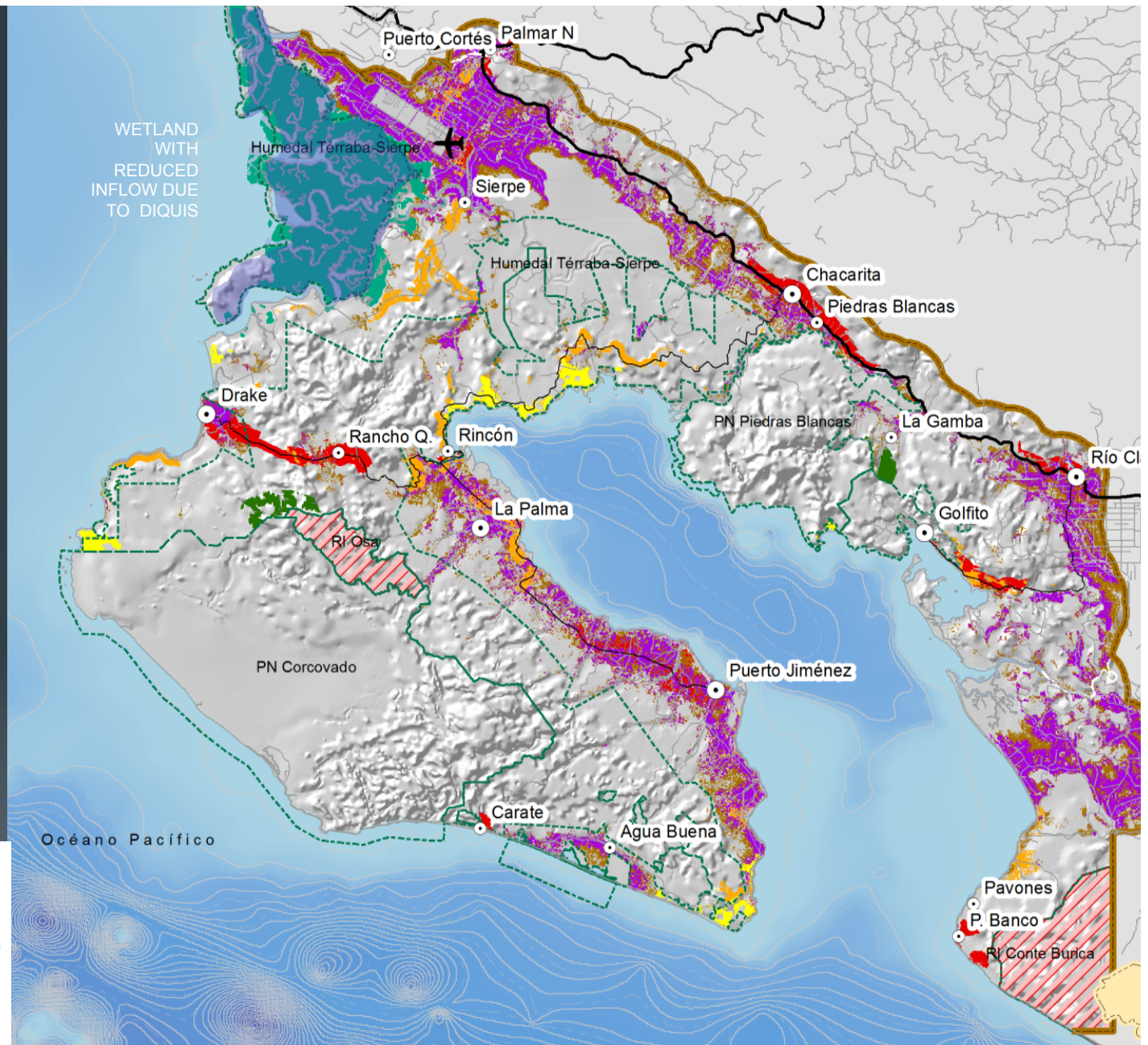
HEALTH/EDUCATION



With improved access  
(same infrastructure)

# Rapid Growth Scenario 2030

- +23,400 people(+35%)
- With infrastructure improvements
- +1000 hect/year PES
- 700 rooms (+50 hotels)
- Without enforcing land or marine use regulations(anything goes)
- With Diquis and Airport
- With agricultural expansion



# 3. Proactive Scenario

POPULATION



+23,400 people (+35%)

INFRASTRUCTURE



Electricity, Paved roads, bridges

CONSERVATION



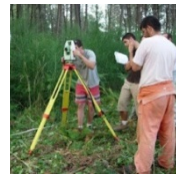
+ 7000 hect/year PES  
+ Key conservation gaps filled

TOURISM



450 hotel rooms  
(+30 hotels)

LAND USE PLANNING  
AND MARINE  
SPATIAL PLANNING



Regulation implemented  
and enforced

SPECIAL PROJECTS



With a regional airport  
and Diquis

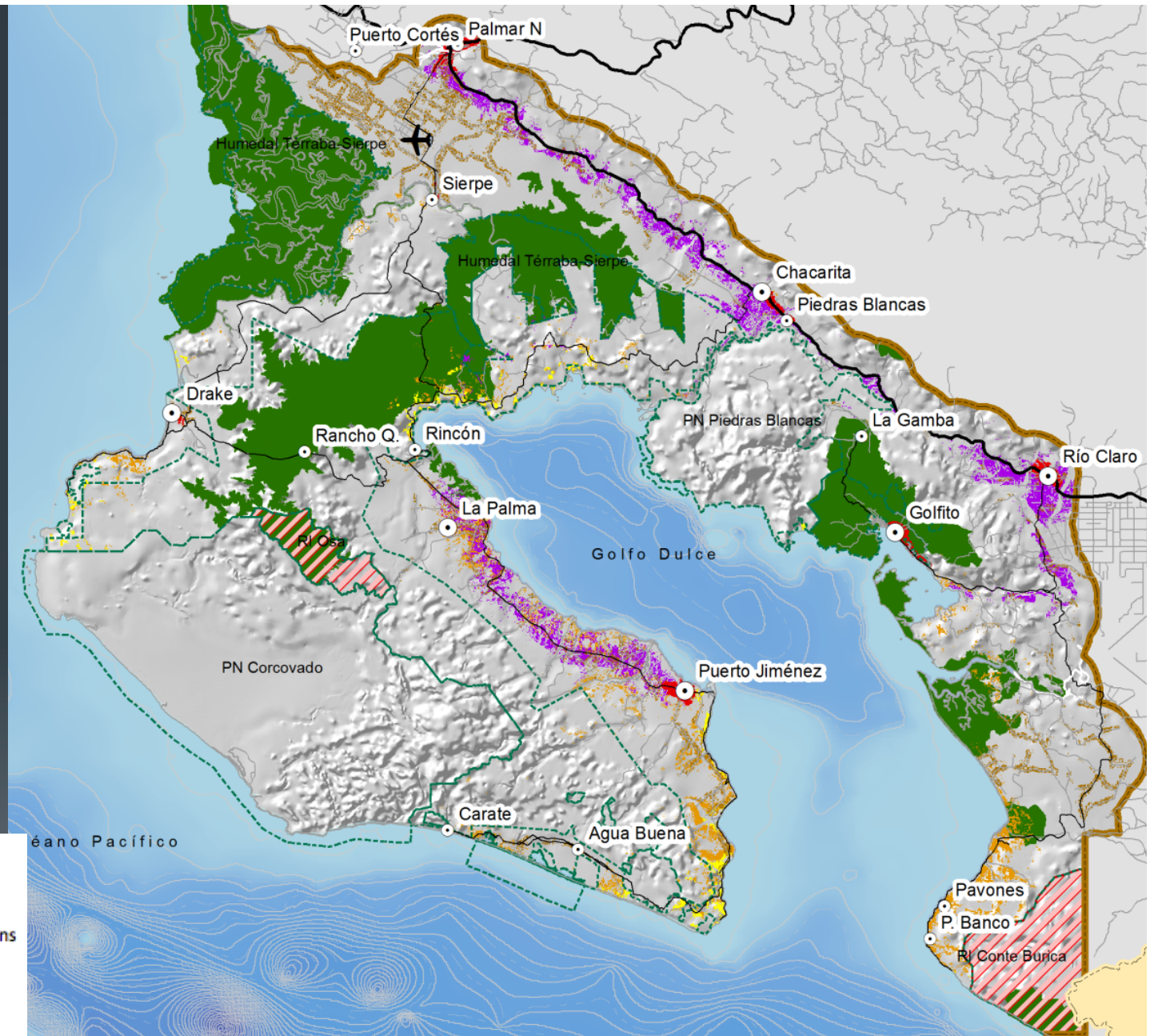
HEALTH/EDUCATION



With improved access  
(same infrastructure)

# Proactive Scenario 2030

- +23,400 people (+35%)
- With improved infrastructure
- +7000 hect/year PES  
+Key conservation gaps
- 450 rooms (+30 hotels)
- Regulation Enforced
- With Diquis and a Regional airport
- With agriculture



Roads	Category
— Highway	■ Conservation
— Secondary road	■ Development
— Tertiary road	■ Palm Oil Plantations
	■ Tourism
	■ Vacation Homes
	■ Agriculture