

# “The Work of Fundación Neotrópica and Costa Rica’s “Green Economic” Efforts”

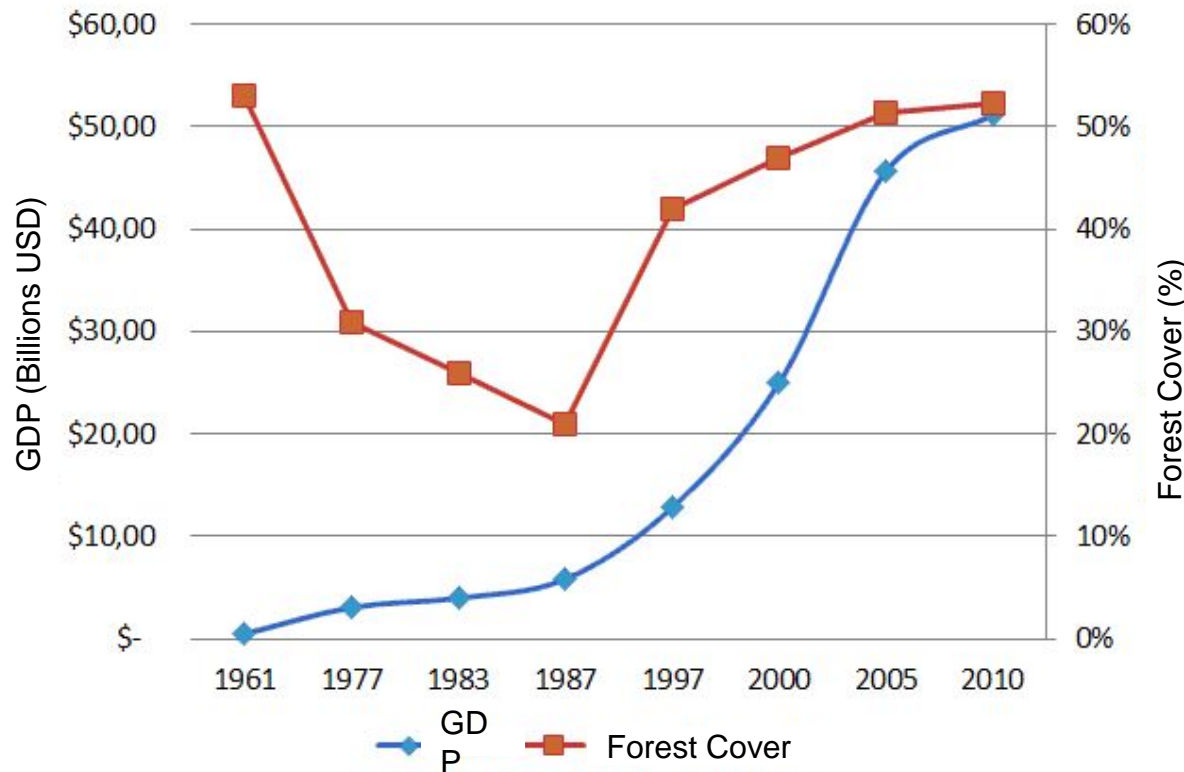


May 2, 2013

Bernardo Aguilar-González,  
Executive Director,  
Fundación Neotrópica  
President, SMEE



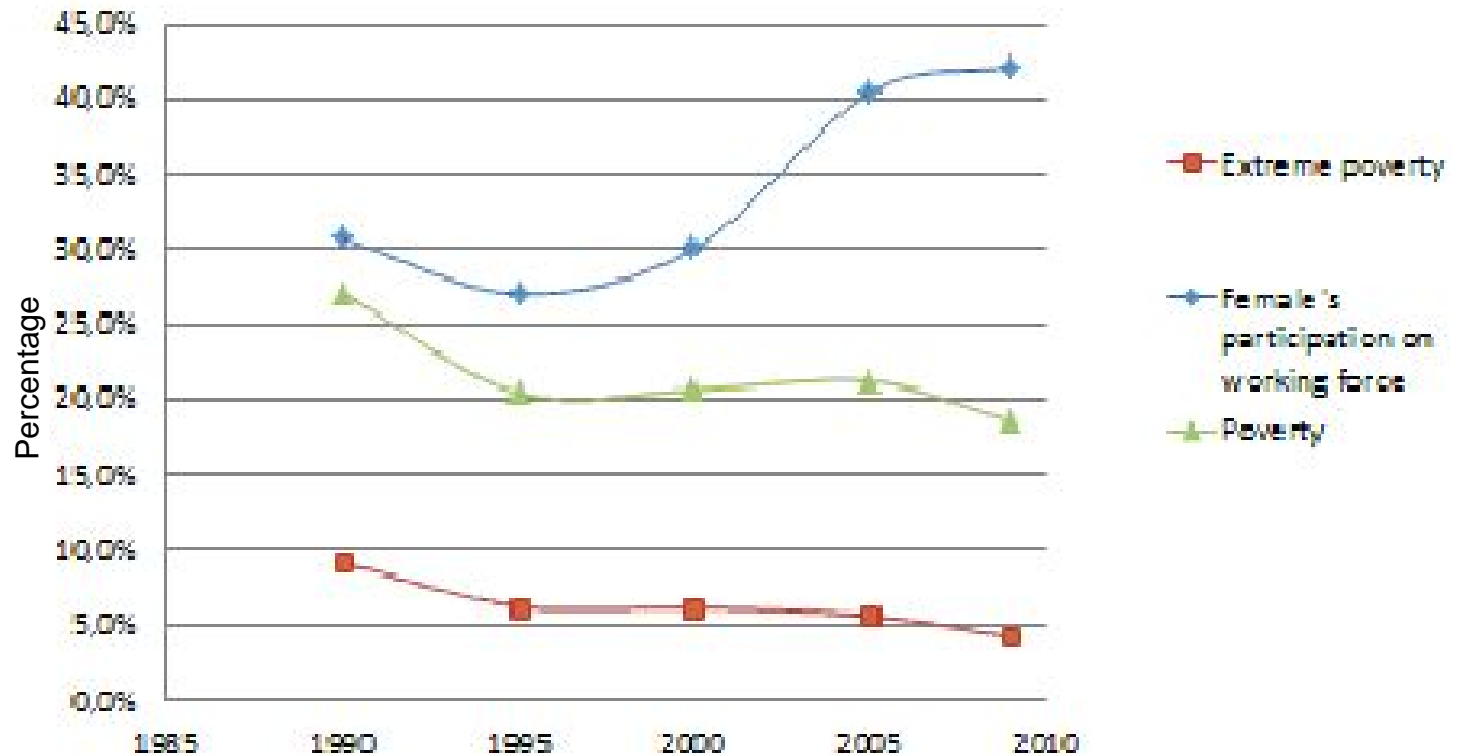
# Costa Rica: A Green Economy?



Fuente: [Index Mundi](#), [Nation Master](#), FONAFIFO, MINAET

Elaborado por: G. Aguilar

# A Green Social Economy?



# Most sustainable and happy!

ABOUT NEF | CONTACT US | DOWNLOADS



## un THE HAPPY PLANET INDEX 2.0

Home ● Learn ● Explore ● Engage ● News ●

Search  GO

NEWS OVERVIEW ▶

ARCHIVE ▶

### Costa Rica tops Happy Planet Index

HOME > NEWS



The Happy Planet Index 2.0 reveals a surprising picture of the relative wealth and progress of nations.

The second global ranking of well-being and environmental impact shows that:

- Costa Rica comes top of the Happy Planet Index 2.0. Costa Ricans report the highest life satisfaction in the world, have the second-highest average life expectancy of the Americas (second only to Canada) and have an ecological footprint that means that the country only narrowly fails to achieve the goal of 'one-planet living': consuming its fair share of the Earth's natural resources.
- Latin America dominates the top of the index. Nine of the ten top-scoring nations on the Index are in Latin America. The highest-ranking G20 country in terms of HPI is Brazil, in 9th place out of 143





# The challenge of prominence

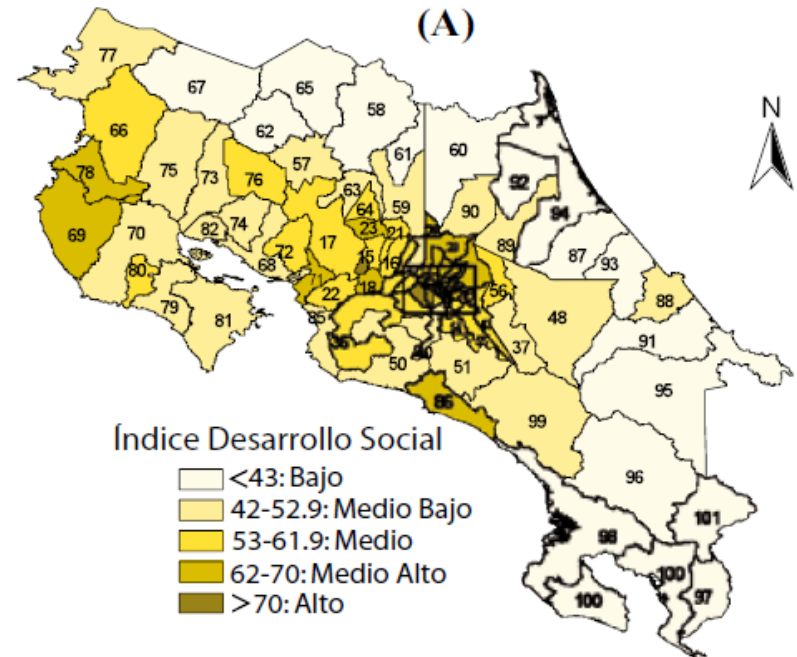
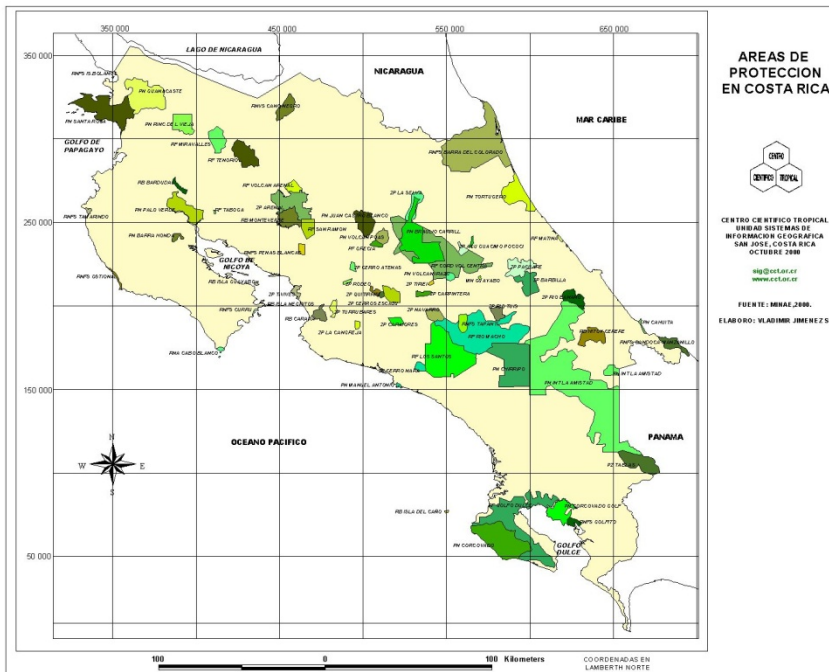


# State of the Nation Report

- Higher Ecological Footprint
- Increasing level of environmental conflictivity (to the point that it has become a major concern for project feasibility)
- Increasing level of social inequity



# A Coincidence of Concern





## Our mission

Fundacion Neotropica promotes **social dialogue** and **community self management** in **conservation** for the **fair and equitable sharing** of benefits generated by **natural resources**.



# Neotrópica's Solution

Encourage  
community  
self-management

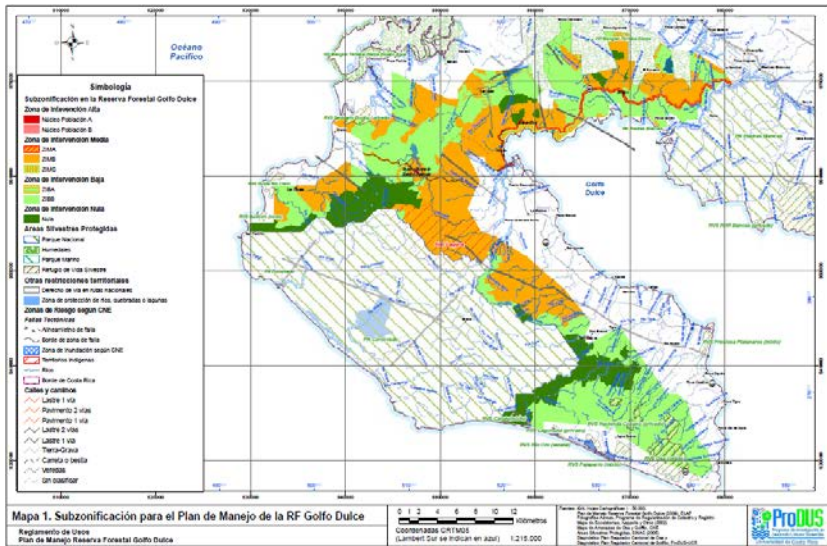
Accompany  
the process  
of community  
empowerment

Promote  
global  
environmen-  
tal citizenship

Promote  
Sustainable  
production  
practices



# Since 1988 - Productive Activities for the Osa Peninsula Region as a resource to resolve conflictivity



Este documento es parte de la Iniciativa Osa y Golfito, INOGO

Conciliando productivamente:  
identificación de actividades viables de  
producción sostenible para pobladores/as  
de la Reserva Forestal Golfo Dulce

Bernardo Aguilar, Lorena Erbure, Alexander González,  
María Estelí Jarquín, Ilse Lucke, Adriana Hidalgo, Adriana Fernández,  
Natalia Vargas, Marco Hidalgo, Marcia Carranza y Ebenezer Houndjijou  
Fundación Neotrópica

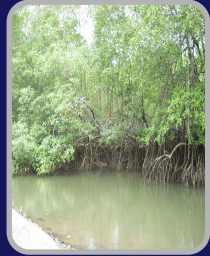


San José, Costa Rica  
Febrero, 2013

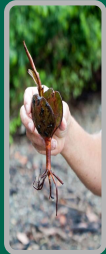


**BOSCOSA: Forest  
Conservation and  
Management through  
Local Institutions  
(Costa Rica)**

# Participatory Wetland Conservation Projects



Blue Carbon (CR's Goal of Carbon Neutrality)



Community Conservation of Wetlands

PROYECTO MANGLE-BENIN

Los manglares del **Golfo Dulce** son fuente de importantes **Servicios Ambientales** no sólo para los pobladores de la **Región Sur** de Costa Rica, sino para el país... y para el mundo.

Protegamos este valioso ecosistema. Evitemos las prácticas que afectan su salud. Ayudemos a disminuir la sedimentación en el Golfo Dulce. Detengamos la contaminación y degradación de esta fuente de vida.

¡Luchemos juntos por los manglares!

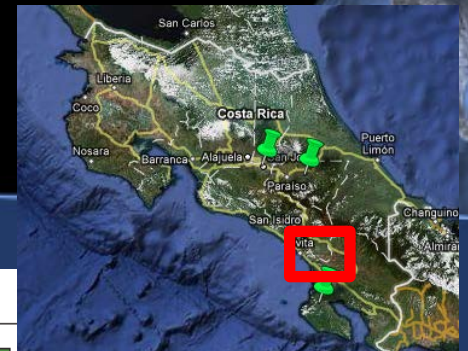
Presentado por: **Asociación de Mujeres y Jóvenes del Golfo Dulce**, **Comunidad de la Zona Protectora de Manglares del Golfo Dulce**, **Red de Organizaciones de la Zona Protectora de Manglares del Golfo Dulce**

Proyecto del Programa de **Conservación de los Recursos Naturales** de la **Asociación de Mujeres y Jóvenes del Golfo Dulce**

www.neotropica.org | info@neotropica.org | (0603) 2253-2138



Mapa 6. Humedal



### Gigantesca represa se levantará en el sur

Mediante el mejoramiento del río General, en la zona sur, se creará un embalse con capacidad para almacenar de electricidad a un millón de familias. La obra se iniciará a finales del próximo año y estará terminada en el 2015.

**EMBALSE**  
La represa tendrá una extensión de 25 km<sup>2</sup> y un volumen de 150 millones de m<sup>3</sup> de agua.

**RELOCACIÓN**  
La represa obligará a reubicar a 100 personas, como 3 kilómetros de la vía Interamericana sur y construir un puente sobre el embalse.

**PUNTE**  
Un puente de 1 km tendrá la construcción de nuevo banco de carreteras que tiene un largo de 17 kilómetros.

**El embalse tendrá una presa en Terraba**

**LA PRESA**  
Esta será la mayor presa del país. Tendrá casi 13 millones de m<sup>3</sup> de material y se edificará con la técnica de empujamiento con patada de hormigón.

**DESCARGAR AGUA EN TURBINAS**

Embalse	100 millones
Diques	257 millones
POTENCIA	157 megavatios

**DESCARGAR AGUA EN TURBINAS**

Embalse	100 millones
Diques	257 millones
POTENCIA	157 megavatios

**LA PRESA**  
Esta será la mayor presa del país. Tendrá casi 13 millones de m<sup>3</sup> de material y se edificará con la técnica de empujamiento con patada de hormigón.

**DESCARGAR AGUA EN TURBINAS**

Las líneas de transmisión de energía van a áreas industriales y comerciales.

El agua entrará a las turbinas desde un canal de 200 metros de ancho y se convertirá en electricidad mediante un campo magnético y luego se moderará por los transformadores.

El movimiento de la turbina es transformado en electricidad mediante un campo magnético y luego se moderará por los transformadores.

El agua pasa a una subestación desde donde es transportada al resto del país con los líneas de transmisión. Una vía hacia Río Macho (Turkey) y otra a Desamparados (San José).

**DESCARGAR AGUA EN TURBINAS**

Embalse	100 millones
Diques	257 millones
POTENCIA	157 megavatios

Datium: OCOTEPEQUE,  
 Elaboró: Ing. Carlos Sevilla Segura  
 sevillas@ioe.co.cr  
 Nota. La zonificación incluye las áreas de ampliación.  
 Fuentes:  
 HNTS: COTOBIRA, 2005.  
 Revisión de límites: Ing. Carlos Sevilla,  
 Zonificación: Equipo de Planificación.



# Integrated Ecosystem Valuation and Multicriteria Aided Analysis



\$12,000 to \$102,000 of environmental services per hectare per year!  
18-42 metric tons of carbon fixed per hectare per year (equivalent to the emissions of 3 to 8 automotive vehicles according to EPA).

What are these numbers goods for, if for anything?



Sociedad  
Mesoamericana de  
Economía  
Ecológica



FUNDACION  
NEOTROPICA



# Workshops Participatory Process





# Results Presented to Conservation Area leadership and regional council

(Aguilar-González & Moulaert-Quirós, 2011)

- Community stakeholders consistently supported more those development options that included the management plan as a planning and protection mechanism



The screenshot shows the website elpais.cr. At the top, there is a banner for 'Pimienta' restaurant with the text 'ABRE SUS PUERTAS' and '300 mts sur de Plaza Cristal casa esquinera, mano derecha'. Below this, the date 'Viernes 30 de Julio, 2010' is displayed. The main navigation bar includes links for 'Portada', 'Nacionales', 'Internacionales', 'Opinión', 'Deportes', 'Ambiente', 'Economía', 'Cultura', 'Tecnología', 'Humor', and 'Insólito'. A search bar is located below the navigation. The main article is titled 'Management Plan for the Térraba-Sierpe Reserve Approved' and is dated '18/05/2010'. The article text states: 'San José (elpais.cr) - La Fundación Neotropical saludó la aprobación, por unanimidad, en el Consejo Regional del Área de Conservación de Osa (ACOSA), del Plan de Manejo para el Humedal Nacional Térraba Sierpe (HNTS), en momentos en que los humedales de Costa Rica están en peligro.' A quote from Bernardo Aguilar, Director Ejecutivo de Neotropica, is also visible: 'Un Plan de Manejo bien estructurado define la manera en que se va a trabajar con respecto a los conflictos ambientales relacionados con los usos de la tierra y permite ofrecer alternativas para que las comunidades en el área de influencia puedan desarrollar sus actividades productivas de una manera sostenible y responsable'. An aerial photograph of a wetland area is shown on the right side of the article.

# More details



## ECOLOGICAL ECONOMICS FROM THE GROUND UP



Edited by HALI HEALY,  
JOAN MARTÍNEZ-ALIER,  
LEAH TEMPER,  
MARIANA WALTER  
& JULIEN-FRANÇOIS GERBER

earthscan  
from Routledge

### Chapter 17: ECOTICOS: MULTIDIMENSIONAL VALUATION FOR ENVIRONMENTAL CONFLICT ANALYSIS IN COSTA RICA<sup>1</sup>

Bernardo Aguilar-González<sup>2</sup> and Azur Moulart (Fundación Neotrópica, Costa Rica)<sup>3</sup>

#### Abstract

This paper focuses on the environmental conflicts affecting the Térraba-Sierpe National Wetland Reserve (TSWR) in Costa Rica's South Pacific region. The threats to this area include today real estate and tourism development, an projects for an international airport, and a hydroelectric dam. Added to this, the area lacks adequate personnel, financial resources and governmental support which has made the approval and implementation of a management plan developed through a participatory approach impossible. The collaborative Project ECOTICOS sought to study and affect these conflicts through the integration of web-based information dissemination tools, GIS information, biophysical data, environmental service valuation and multi-criteria analysis (MCA). The MCA component was executed under the leadership of Fundación Neotrópica, one of Costa Rica's main environmental Non Government Organizations. It consisted of a participatory process which incorporated various significant civil society actors from the national, international and TSWR region level. The geographic, biophysical and monetary valuation information were used as part of the inputs to evaluate scenarios through a combined Delphi, focus group and visioning sessions. The end product synthesized the ranked preferences of the communities involved and the identification of possible social alliances. Such results were presented to local authorities and the regional conservation area council in meetings where the management plan was being discussed for approval. The plan was successfully approved making this a case study of community advocacy that resulted in a positive policy accomplishment.

Keywords: Multi-criteria analysis, ecosystem services valuation, participatory processes, GIS, wetland conservation, tourism, hydroelectricity, socio-ecological



Sociedad  
Mesoamericana de  
Economía  
Ecológica



FUNDACION  
NEOTROPICA



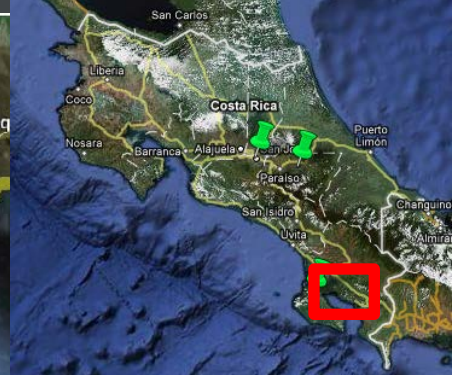
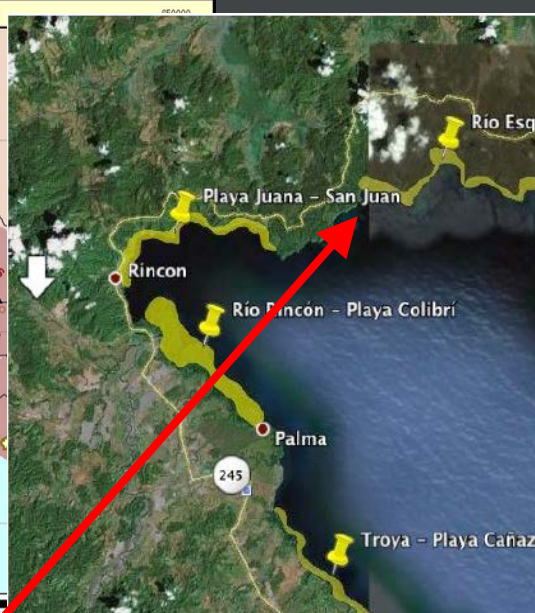
# Mangle-Benin Reforestation & Community Empowerment



Local technologies of planting and nurseries



Asociación de manglares Sitio Osa, Costa Rica



Largest embryo in plant kingdom

More than 105,000 seedlings communally planted with 6 species







[www.neotropica.org](http://www.neotropica.org)

# Awareness: +750 people ( 50% + women)-11 communities



Bahia Chal



6 schools  
environmental  
clubs

Best  
Practices  
Workshops



Sustainable  
Productive  
Activity  
Workshops



Community  
Reforestation

Environmental  
Festivals



# Alternatives to Public Conservation



- Cases where community conservation/management are of particular significance?



# Blue Carbon Projects

- *Corporate Outreach project that seeks an alliance between communities, civil society and private companies*

Stanford  
University  
Presentation





# Community Nursery Work

Stanford  
University  
Presentation





# Recognition



[Home](#) [About us](#) [Join us](#)

## ARTICLES

### Wetland Conservation Program receives international recognition

 Imprimir

Costa Rican organization received today a Conservation and Environment Grant from Ford, in recognition for its work.

The Fundación Neotrópica received, from Ford Company and its country representative National Automotive NASA SA, last Tuesday, recognition of its work in the conservation of mangroves in the Golfo Dulce and a grant of about \$ 11,000 to strengthen its work.

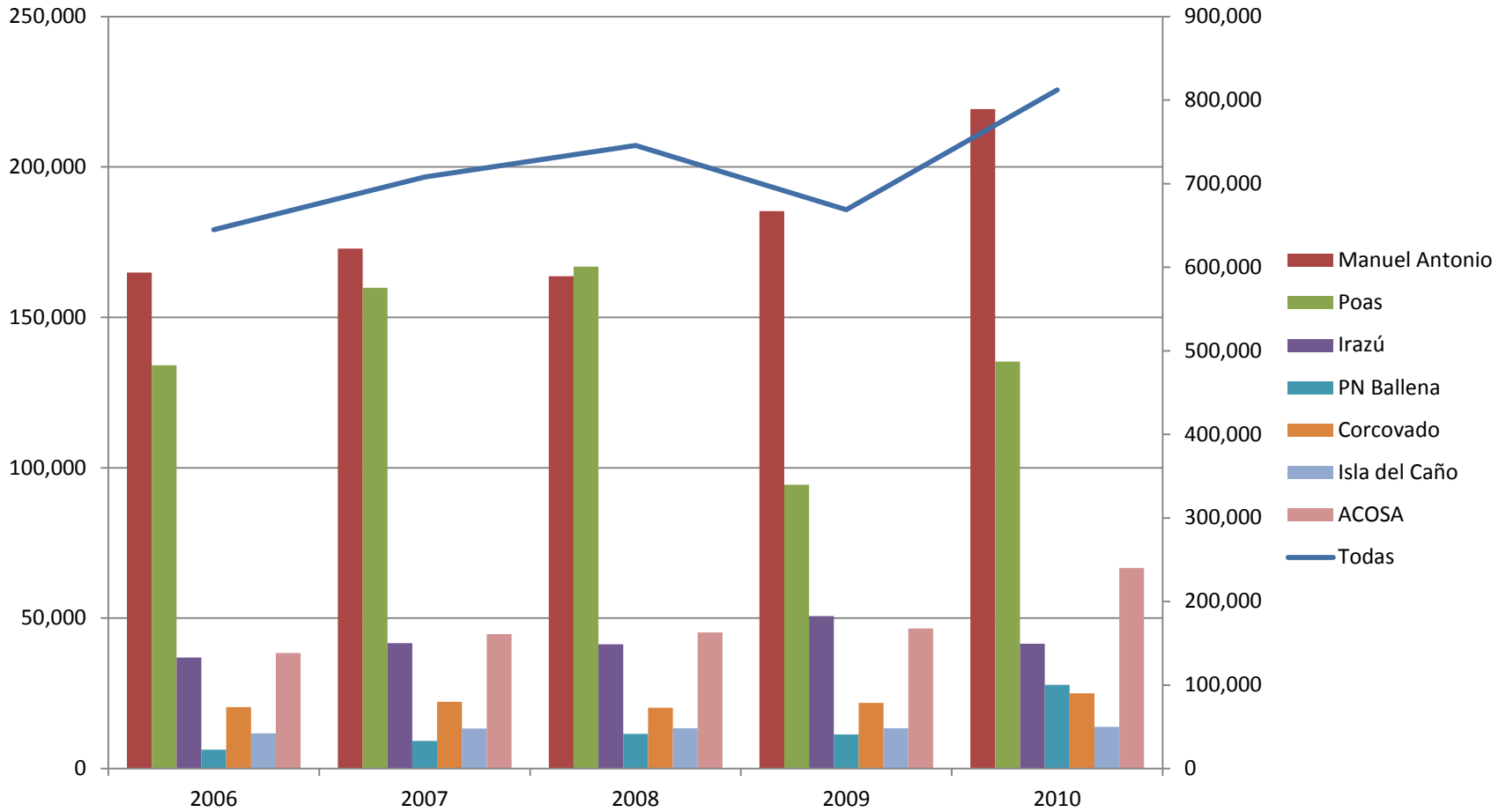
The recognition called "Ford Conservation and the Environment Grants" was sent from the company's corporate headquarters in the United States, as a way to highlight the work that the organization drives with the Blue Carbon Community Program.

This program seeks undertake conservation work on mangroves in the Pacific Coast of Costa Rica, in partnership with local organizations, helping to strengthen this important coastal ecosystem. Ford's contribution is supporting work specifically in Golfo Dulce, on the South Pacific of Costa Rica.



Mariano Guardia y Bernardo Aguilar

# Tourism to Protected Areas



## I Stage: Training

- Project Selection
- Training in RTC
- Best practices
- Complementary Services

## III Stage: Community Integration

- Association Strategies
- Exchange Experiences
- Strengthening Organizational Capacities



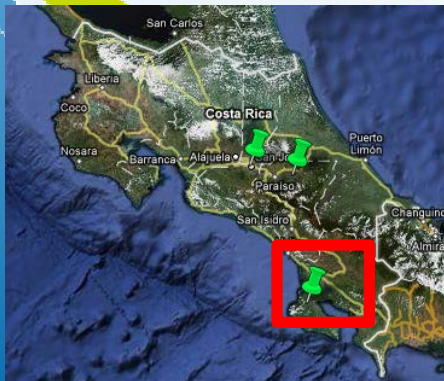
## IV Stage: Marketing Strategy

- Formulation
- Marketing Mix Design
- Alliances



## II Stage: Implementation

- Business plans
- Financing
- Advise and follow-up





# COOPETURIC

## *Cooperativa de Servicios Múltiples de Emprendedores en Turismo Rural de la Península de Osa*





## **COOPETURIC**

is made up by 8 women...







**... and 15 men**





**COOPETURIC**  
has more than 60 direct  
beneficiaries



More than 60% of the  
beneficiaries of  
**COOPETURIC**  
are adults or young adults

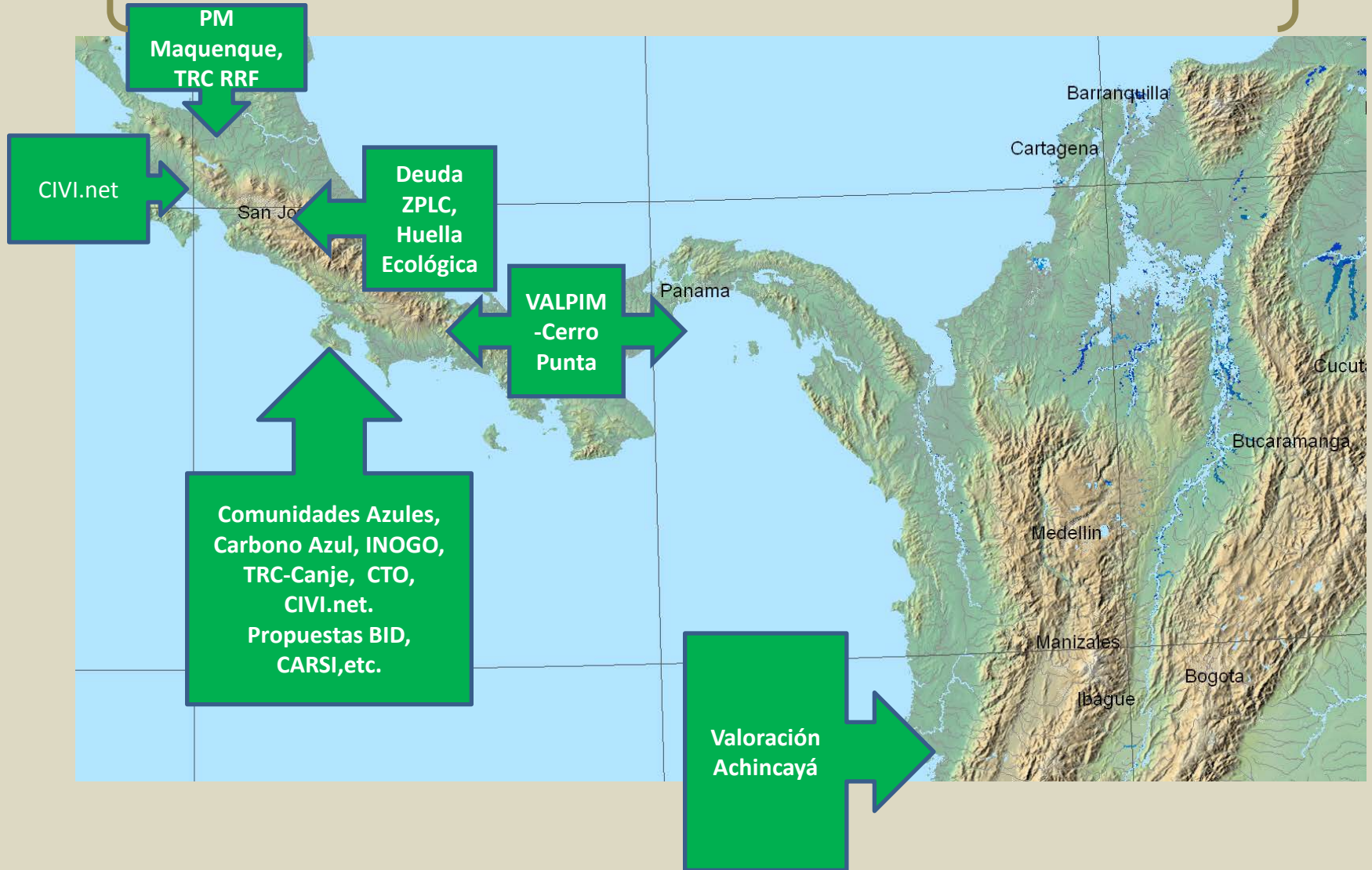




Between all of them  
they are protecting  
**913 hectares**  
(over 2000 acres)  
of forest (mostly old growth)



# Where do we implement our mission?







Thank you very much!



Sociedad  
Mesoamericana de  
Economía  
Ecológica



FUNDACION  
NEOTROPICA